

## Plastic Optical Fiber End Finishing

Typical  
Appearance



**Type:** Scissors  
**Loss (for 2 ends):** -5 dB  
**Used for:** rough cut before finishing  
**Relative Cost:** -



**Type:** Machine Cut  
**Loss (for 2 ends):** -3.5 dB  
**Used for:** rough cut before finishing  
**Relative Cost:** \$

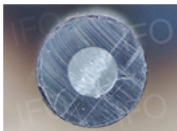


**Type:** Anvil Blade Cut  
**Loss (for 2 ends):** -2.2 dB  
**Used for:** rough cut before finishing  
**Relative Cost:** \$

Typical  
Appearance



**Type:** IF FCS Razor Cut  
**Loss (for 2 ends):** -2.2 dB  
**Used for:** Sensor cables  
**Relative Cost:** \$

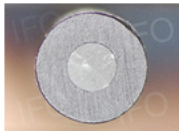


**Type:** IF FC1 Razor Cut  
**Loss (for 2 ends):** -0.8 dB  
**Used for:** Connectorless terminations  
**Relative Cost:** \$

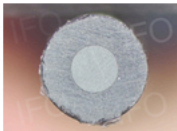


**Type:** Automated Cut/Polish  
**Loss (for 2 ends):** -0.3 dB  
**Used for:** Light Pipes  
**Relative Cost:** \$

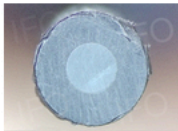
Typical  
Appearance



**Type:** 30  $\mu$ m Polish  
**Loss (for 2 ends):** -1.4 dB  
**Used for:** -  
**Relative Cost:** \$

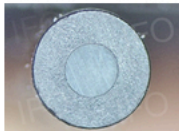


**Type:** 9  $\mu$ m Polish  
**Loss (for 2 ends):** -0.8 dB  
**Used for:** Low Cost Data com (short range)  
**Relative Cost:** \$

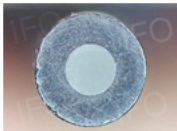


**Type:** 3  $\mu$ m Polish  
**Loss (for 2 ends):** -0.2 dB  
**Used for:** Standard Patchcords, SERCOS  
**Relative Cost:** \$\$

Typical  
Appearance



**Type:** Diamond Milling  
**Loss (for 2 ends):** -0.1 dB  
**Used for:** Very low loss  
**Relative Cost:** \$\$\$



**Type:** 1  $\mu$ m Polish  
**Loss (for 2 ends):** 0  
**Used for:** Low Loss Data Com  
**Relative Cost:** \$\$\$

All photos are TC-1000 fiber: 2.2 mm Polyethylene Jacket with 1 mm core.  
Loss is relative to a 1  $\mu$ m polish.

[Download PDF Version](#)